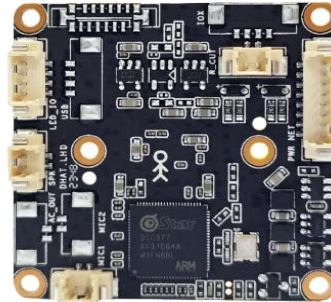


## MC-A52 5MP Dual-light 1/3"CMOS Module



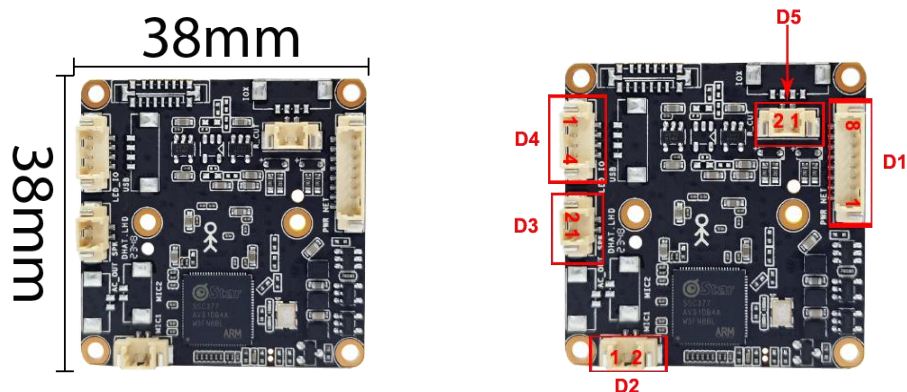
The MC-A52 features a 1/3-inch 5MP CMOS sensor and supports advanced H.265+/H.265/H.264 encoding. It offers versatile lighting modes including dual-light, full-color, and infrared. With intelligent analysis capabilities such as accurate human detection and customizable zones, it ensures precise monitoring. Additionally, it supports voice intercom, voice broadcast, and custom voice functions, along with image flip and digital wide dynamic range. The module is Onvif compliant and provides SDKs for Windows, Android, and Linux platforms.

### Key Features

- 1/3" 5MP CMOS Sensor
- Support H.256+, H.256, H.264 encoding.
- Support soft light sensitivity and full color .
- Support two way audio, voice broadcast, custom voice messages.
- Support image flipping and support digital WDR.
- Support ONVIF.
- Support human detection and customizable zones.
- SDK development kits are provided (Support Windows, Linux, Android)

## Technical specifications:

Image sensor	
Model	MC-A52
SOC	SSC377
Sensor	1/3" 5MP CMOS
Maximum resolution	2888 * 1620@20fps
Minimum illumination	/
Camera	
AGC	Auto/Manual
S/N Ratio	/
Shutter speed	/
Wide dynamic range	Digital WDR≥73.7dB
Exposure mode	Auto/ Manual/shutter mode
White balance	Auto/ Manual /ATW/ Indoor/Outdoor/ lamp
Day & Night	Supported
Image resolution	
Main stream	20@FPS 2888*1620, 25FPS@ (2560*1440, 2304*1296, 1920*1080, 1280*720)
Sub stream	640*360/VGA/D1
Audio resolution	
Audio Out/In	Supported/Wired required
Audio processing	G.711 Codec Standard/ Supports two-way voice intercom and audio-video synchronization.
Protocol	
Network protocol	HTTP/RTSP/DHCP/NTP/P2P/ONVIF etc.
Interface	
Network interface	10/100Mps Base-T Ethernet, 1*RJ45 interface
IRCUT interface	Integrated IRCUT switching circuit with automatic, external, manual, and timed control for day/night mode.
Light board interface	PWM yellow light
Storage interface	/
Extra interface	/
General	
Power supply	DC 12V 100mA 1.2W /Protected from lightning
Additional functions	OSD supported/Two way audio/Support audio and video synchronously/Voice alarm/Support human detection and customizable zones
Standard	International: IEC61000-4-5 China: GB/T17626.5
Size	(L)38mm * (W)38mm
Operation temperature	-40°C~+65°C
Working humidity	≤90% RH (non-condensing)



IO	FUNCTION	PIN	PIN NAME	DESCRIPTION
<b>D1</b>	8-Pin network & Power interface	1	DC12V+	DC 12V input
		2	GND	Ground
		3	RJ45_6	RX-
		4	RJ45_3	RX+
		5	RJ45_2	TX-
		6	RJ45_1	TX+
		7	RESET	Reset
		8	LED+	Network status indicator light
<b>D2</b>	2-pin Primary Microphone	1	MIC-	Primary microphone
		2	MIC+	
<b>D3</b>	Speak out	1	SPK+	Speak output (8 $\Omega$ 2W)
		2	SPK-	
<b>D4</b>	Light control	1	CDSIN	Photoresistors
		2	GND	Ground
		3	PWM1	IR
		4	PWM0	Yellow light /White light
<b>D5</b>	IR-CUT interface	1	IR-CUT Signal control	Output
		2		